

LOW PRESSURE GAUGES



Low Pressure Gauges

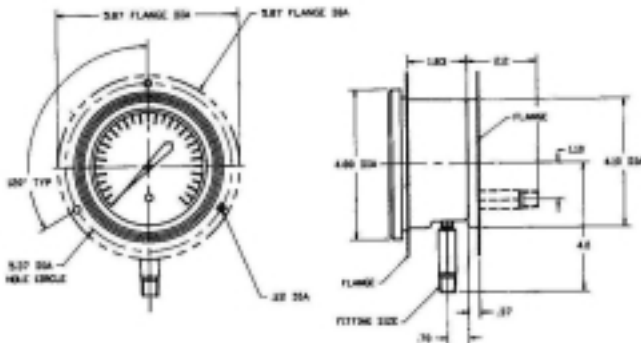
Accurate and reliable low pressure gauges available in 4 1/2" Dyna-mount cases and stainless steel cases.

Features:

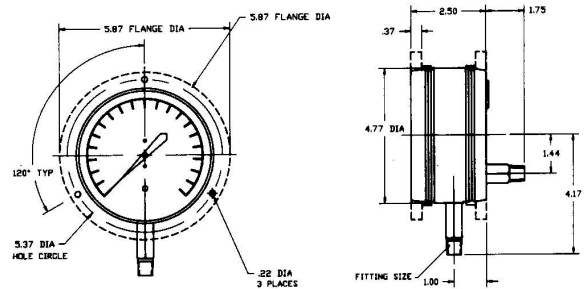
- Adjustable Dyna-mount fitting and flange
- Adjustable zero setting
- Standard changeable filter
- All Wetted surfaces stainless steel construction
- 150 % Overpressure with no effect on calibration
- 500 % Burst pressure
- Design tested to 500,000 cycles
- Ranges available from 0-25 inches of water (60 mbar) to 15 psig (1000 mbar)
- Fitting size changeable in the field

Benefits:

- Application flexibility, bottom or back mount in one unit
- Longer service life
- Rezero capability
- Corrosion resistance



STAINLESS STEEL CASE



PLASTIC CASE

The "Direct Drive Difference"

Pressure Ranges: 25 inches (60 mbar) of water to 15 psig (1000 mbar)

Accuracy: +/-2.0% of full scale + 1.0 %*

Ambient Temperature: -65°F to 190°F (-54°C to 88°C)

Proof Pressure: 150 % full scale no calibration shift

Burst Pressure: 500 % of full scale

Operating Media: Any gas media suitable for contact with 316 stainless steel

MATERIALS

Sensing Element: Stainless steel
 Fitting: 316 stainless steel
 Dial: 300 series stainless steel
 Movement: Brass

STAINLESS STEEL CASE MATERIALS

Case: 300 series stainless steel electro-polished
 Crystal: Acrylic (or optional glass)
 Flange: 300 series stainless steel (Optional)

HIGH IMPACT PLASTIC CASE MATERIALS

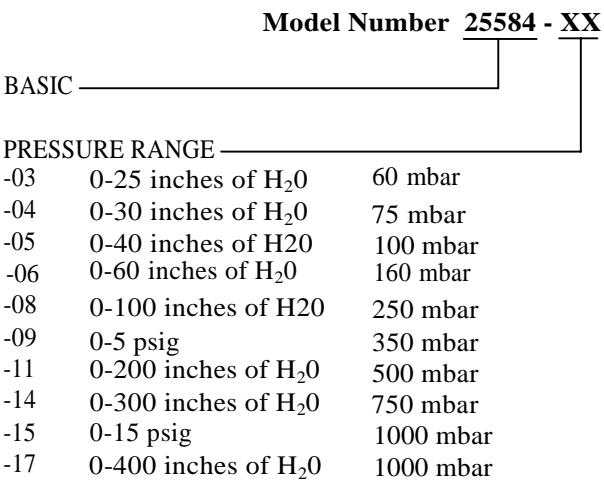
Case: High impact resistant Cycolac Plastic
 Crystal: Acrylic
 Flange: High impact resistant

* Consult factory for price and delivery

MOD CODE LISTING

None - "psig" and "in H₂O" ranges / scales
 "ISZ" - "oz/in²" ranges / scales
 "ISB" - "mbar" or "bar" ranges / scales
 "ISO" - "kPa" ranges / scales
 "ISK" - "kgf/cm²" and "mm H₂O" ranges / scales
 "ISZD" - Dual scale with "oz/in²" inner scale and "psig" or "in H₂O" outer scale
 "ISBD" - Dual scale with "mbar" inner scale and "psig" or "in H₂O" outer scale
 "ISOD" - Dual scale with "kPa" inner scale and "psig" or "in H₂O" outer scale
 "ISKD" - Dual scale with "kgf/cm²" or "mm H₂O" inner scale and "psig" / "in H₂O" outer scale
 "CPB" - 0 to 100 % linear scale for receiver gauge
 "CPA" - 0 to 10 square root scale for receiver gauge
 "GCG" - Optional 1.0 % (of Span) Accuracy
 "GBT" - Optional Laminated Glass Crystal (Stainless Steel Case Only)

Note: More than one Mod Code can be used at the end of the model number.



ORDERING INFORMATION

CASE

- 1 = black ABS Plastic
- 4 = yellow ABS Plastic
- 5 = stainless steel

FLANGE / FITTING POSITION

- 1 = front / bottom
- 2 = front / back
- 3 = none / back
- 4 = back / back
- 5 = none / bottom
- 7 = detached / bottom (ABS only)
- 8 = detached / back (ABS only)

FITTING

- B = 1/4 NPTM
- C = 1/2 NPTM

• All metric gauges are standard per ASME B40.1



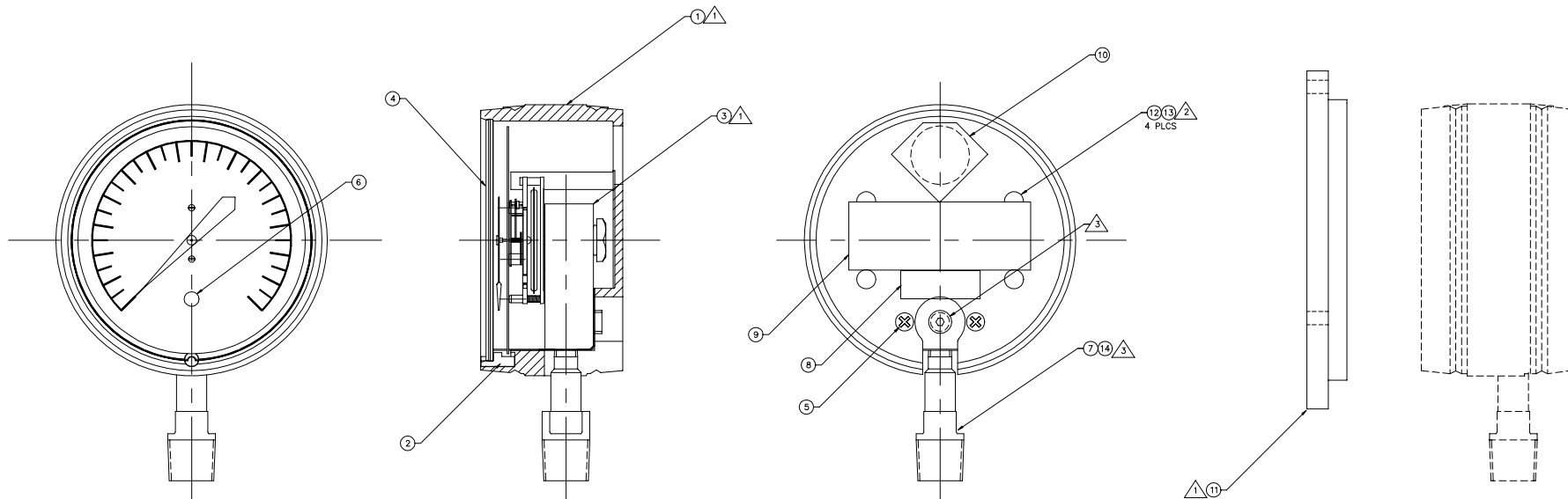
15542 Chemical Lane, Huntington Beach, CA 92649, USA * 714/894-5351 * FAX 714/895-4309

01991 3D Instruments, Inc. Printed in U.S.A. 3D Precision Test Gauges

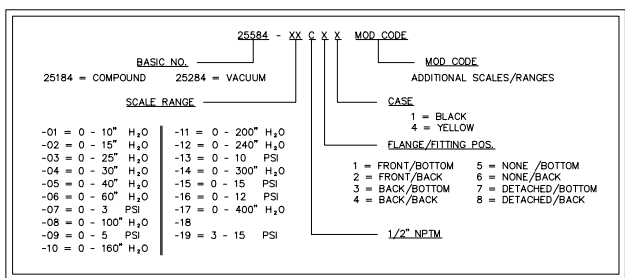
Web Site <http://www.3dinstruments.com>

THE INFORMATION DISCLOSED HEREIN WAS ORIGINATED BY AND IS THE PROPERTY OF S-D INSTRUMENTS, INC. AND EXCEPT FOR RIGHTS EXPRESSLY GRANTED TO THE UNITED STATES GOVERNMENT, S-D INSTRUMENTS, INC. RESERVES ALL PATENT, PROPRIETARY, DESIGN, USE, SALE, MANUFACTURING AND REPRODUCTION RIGHTS THERE TO.

REVISIONS			
REV.	DESCRIPTION	DATE	BY / APPROVED
A	PRODUCTION RELEASE	9-31-94	C.C.



NUMBER DEFINITION:



SCALE RANGE TABULATION CHART

DASH NO.	ITEM 3	REF. SCALE
-01	4120-0001-01	0 - 10" H ₂ O
-02	4120-0001-02	0 - 15" H ₂ O
-03	4120-0001-03	0 - 25" H ₂ O
-04	4120-0001-04	0 - 30" H ₂ O
-05	4120-0001-05	0 - 40" H ₂ O
-06	4120-0001-06	0 - 60" H ₂ O
-07	4120-0001-07	0 - 3 PSI
-08	4120-0001-08	0 - 100" H ₂ O
-09	4120-0001-09	0 - 5 PSI
-10	4120-0001-10	0 - 160" H ₂ O
-11	4120-0001-11	0 - 200" H ₂ O
-12	4120-0001-12	0 - 240" H ₂ O
-13	4120-0001-13	0 - 10 PSI
-14	4120-0001-14	0 - 300" H ₂ O
-15	4120-0001-15	0 - 15 PSI
-16	4120-0001-16	0 - 12 PSI
-17	4120-0001-17	0 - 400" H ₂ O
-18		
-19	4120-0001-16	3 - 15 PSI

- 3 RELOCATE PLUG AND FITTING FOR BACK CONNECT.
- 4 PREPARE 2-PART EPOXY, ITEM 13 AND APPLY IT TO ITEM 12 AS REQUIRED. ALLOW SUFFICIENT TIME TO CURE PRIOR ASSY.
- 4 REFER TO NUMBER DEFINITION FOR "X" UNDER "CASE" OR "XX" UNDER "SCALE RANGE", WHEN APPLICABLE.

NOTES:

QTY.	ITEM NO.	PART NO.	DESCRIPTION
1	15		
1	A/R	14	TEFLON TAPE
1	A/R	13	CLEAR EPOXY & CATALYST
4	12	2138-0044-X	PLUG, PLASTIC
1	11	2064X0087	FLANGE, TLG
1	10	2124-0081	LABEL, BLOWOUT
1	9	2124-0073	LABEL, IDENTIFICATION
1	8	2124-0076	LABEL, WARNING
1	7	2063-0169	FITTING, 1/2" NPTM
1	6	2038-0056	PLUG, ZERO ADJUST
4	5	2154-0001-57	SCREW, 8-32 X 3/4" PHIL FL HD. SS
1	4	2045-0048	CRYSTAL, SILKSCREENED
1	3	4120-0001-XX	MANIFOLD ASSEMBLY
1	2	2135-0075-X	PIN, ALIGNMENT
1	1	3029X0024	CASE, MOLDED

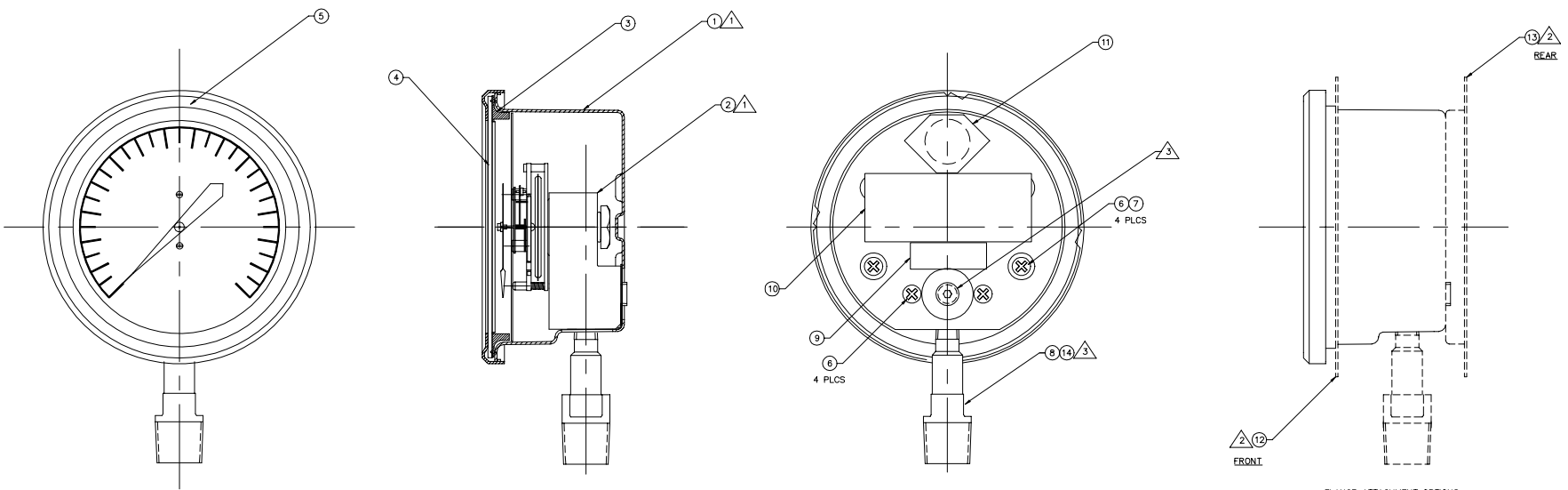
UNLESS OTHERWISE SPECIFIED	APPROVALS	DATE
1. DIMENSIONS ARE IN INCHES. 2. DIMENSIONS IN PARENTHESES ARE FOR REFERENCE ONLY. 3. DIMENSIONS ARE SHOWN AFTER PLATING. 4. SURFACE FINISH IS 12.5 RA UNLESS OTHERWISE SPECIFIED. 5. HOLE DRILLS AND BREAK SHARP EDGES. 6. HOLE DRILLS AND BREAK SHARP EDGES. 7. HOLE DRILLS AND BREAK SHARP EDGES. 8. HOLE DRILLS AND BREAK SHARP EDGES. 9. HOLE DRILLS AND BREAK SHARP EDGES.	DESIGN: C. COJULIN CHECKED: [Signature] DRAWING: [Signature] SCALE: FULL	8.24.93

FILE	DATE	REV
GAUGE ASSEMBLY	25584-XXCXX	A
LOW PRESS. PLASTIC 1/2" FTG.		
D 52159		

8 7 6 5 4 3 2 1

THE INFORMATION DISCLOSED HEREIN WAS ORIGINATED BY AND IS THE PROPERTY OF J-D INSTRUMENTS, INC., AND EXCEPT FOR RIGHTS EXPRESSLY GRANTED BY THE UNITED STATES GOVERNMENT, J-D INSTRUMENTS, INC. RESERVES ALL PATENT, PROPRIETARY, DESIGN, USE, SALE, MANUFACTURING AND REPRODUCTION RIGHTS THERE TO.

REVISIONS				
REV.	DESCRIPTION	DATE	BY	APPROVED
A	PRODUCTION RELEASE	5-31-94	C.C.	



NUMBER DEFINITION:

BASIC_NO.		MOD. CODE	
25184 = COMPOUND	25284 = VACUUM	XX	C X S
SCALE RANGE		CASE	
-01 = 0 - 10" H ₂ O	-11 = 0 - 200" H ₂ O	5 = STAINLESS STEEL	
-02 = 0 - 15" H ₂ O	-12 = 0 - 240" H ₂ O	1 = FRONT/BOTTOM	
-03 = 0 - 25" H ₂ O	-13 = 0 - 10 PSI	2 = FRONT/BACK	
-04 = 0 - 30" H ₂ O	-14 = 0 - 300" H ₂ O	3 = BACK/BOTTOM	
-05 = 0 - 40" H ₂ O	-15 = 0 - 15 PSI	4 = BACK/BACK	
-06 = 0 - 60" H ₂ O	-16 = 0 - 12 PSI	5 = NONE /BOTTOM	
-07 = 0 - 3 PSI	-17 = 0 - 400" H ₂ O	6 = NONE/BACK	
-08 = 0 - 100" H ₂ O	-18	1/2" NPTM	
-09 = 0 - 5 PSI	-19 = 3 - 15 PSI		
-10 = 0 - 160" H ₂ O			

SCALE RANGE TABULATION CHART

DASH NO.	ITEM 3	REF. SCALE
-01	4120-0001-01	0 - 10" H ₂ O
-02	4120-0001-02	0 - 15" H ₂ O
-03	4120-0001-03	0 - 25" H ₂ O
-04	4120-0001-04	0 - 30" H ₂ O
-05	4120-0001-05	0 - 40" H ₂ O
-06	4120-0001-06	0 - 60" H ₂ O
-07	4120-0001-07	0 - 3 PSI
-08	4120-0001-08	0 - 100" H ₂ O
-09	4120-0001-09	0 - 5 PSI
-10	4120-0001-10	0 - 160" H ₂ O
-11	4120-0001-11	0 - 200" H ₂ O
-12	4120-0001-12	0 - 240" H ₂ O
-13	4120-0001-13	0 - 10 PSI
-14	4120-0001-14	0 - 300" H ₂ O
-15	4120-0001-15	0 - 15 PSI
-16	4120-0001-16	0 - 12 PSI
-17	4120-0001-17	0 - 400" H ₂ O
-19	4120-0001-16	3 - 15 PSI

FLANGE ATTACHMENT OPTIONS.

QTY.	ITEM NO.	PART NO.	DESCRIPTION
1	1	3029-0055	CASE, MODIFIED, S.S.
1	1		MANIFOLD ASSEMBLY
1	2	4120-0002-XX	GASKET, CRYSTAL
1	3	2074-0014	CRYSTAL, 4.5" SS CASE
1	4	2045-0039	BEZEL, 4.5" SS CASE
1	5	2124-0076-P	SCREW, 8-32 X 3/8" PHIL PAN HD. SS
8	6	2154-0001-63	NUT, 8-32, SS, ELASTIC STOP
4	7	2127-0035-3	FLANGE, FRONT, 4.5" SS CASE
1	11	2124-0081	FLANGE, REAR, 4.5" SS CASE
1	12	2064-0105	TEFLON TAPE
1	13	2064-0106	LABEL, BLOWOUT
1	14	2124-0076	LABEL, IDENTIFICATION
1	9	2124-0076	LABEL, WARNING
1	8	2063-0189	FITTING, 1/2" NPTM
1	7	2127-0035-3	FLANGE, REAR, 4.5" SS CASE
1	6	2154-0001-63	SCREW, 8-32 X 3/8" PHIL PAN HD. SS
1	5	2124-0076-P	BEZEL, 4.5" SS CASE
1	4	2045-0039	CRYSTAL, 4.5" SS CASE
1	3	2074-0014	GASKET, CRYSTAL
1	2	4120-0002-XX	MANIFOLD ASSEMBLY
1	1	3029-0055	CASE, MODIFIED, S.S.

- 3 RELOCATE PLUG AND FITTING FOR BACK CONNECT.
- 4 FLANGE ATTACHMENT PER SPOT WELDING STANDARD PROCEDURE.
- 4 REFER TO NUMBER DEFINITION FOR FLANGE POSITION AND "XX" UNDER "SCALE RANGE", WHEN APPLICABLE.

NOTES:

UNLESS OTHERWISE SPECIFIED:
 1. DIMENSIONS ARE IN INCHES.
 2. USE INTERPRETATION, DIMENSIONS AND TOLERANCES PER MIL-STD-100 AND AS SHOWN.
 3. TOLERANCES PER MIL-STD-100 AND AS SHOWN.
 4. FINISHES ARE SHOWN WHEN APPLICABLE.
 5. SURFACE FINISHES ARE "A" UNLESS OTHERWISE SPECIFIED.
 6. REMOVE BURRS AND BREAK SHARP EDGES PER MIL-STD-100.
 7. DIMENSIONS PER MIL-STD-100.
 8. DIMENSIONS ARE REQUIREMENTS PER SP-31-24.

APPROVALS:
 DRAWN: C. COULAJAN 8.27.93
 CHECKED:
 ENGINEER:
 MGR. OF MFG. DEPT.:
 MGR. OF QA DEPT.:
 MGR. OF SUPPLY DEPT.:

PRODUCTION FILE NO. 5840CX5.DWG
 SCALE: FULL
 SHEET 1 OF 1

10000 DYNAMIC LINE
 HAWTHORN BEACH, CA 92038
 TEL: 714-864-8300
 FAX: 714-865-0200

J-D Instruments, Inc.
GAUGE ASSEMBLY
 LOW PRESSURE, S.S. 1/2" FTG.
 D 52159 25584-XXCX5